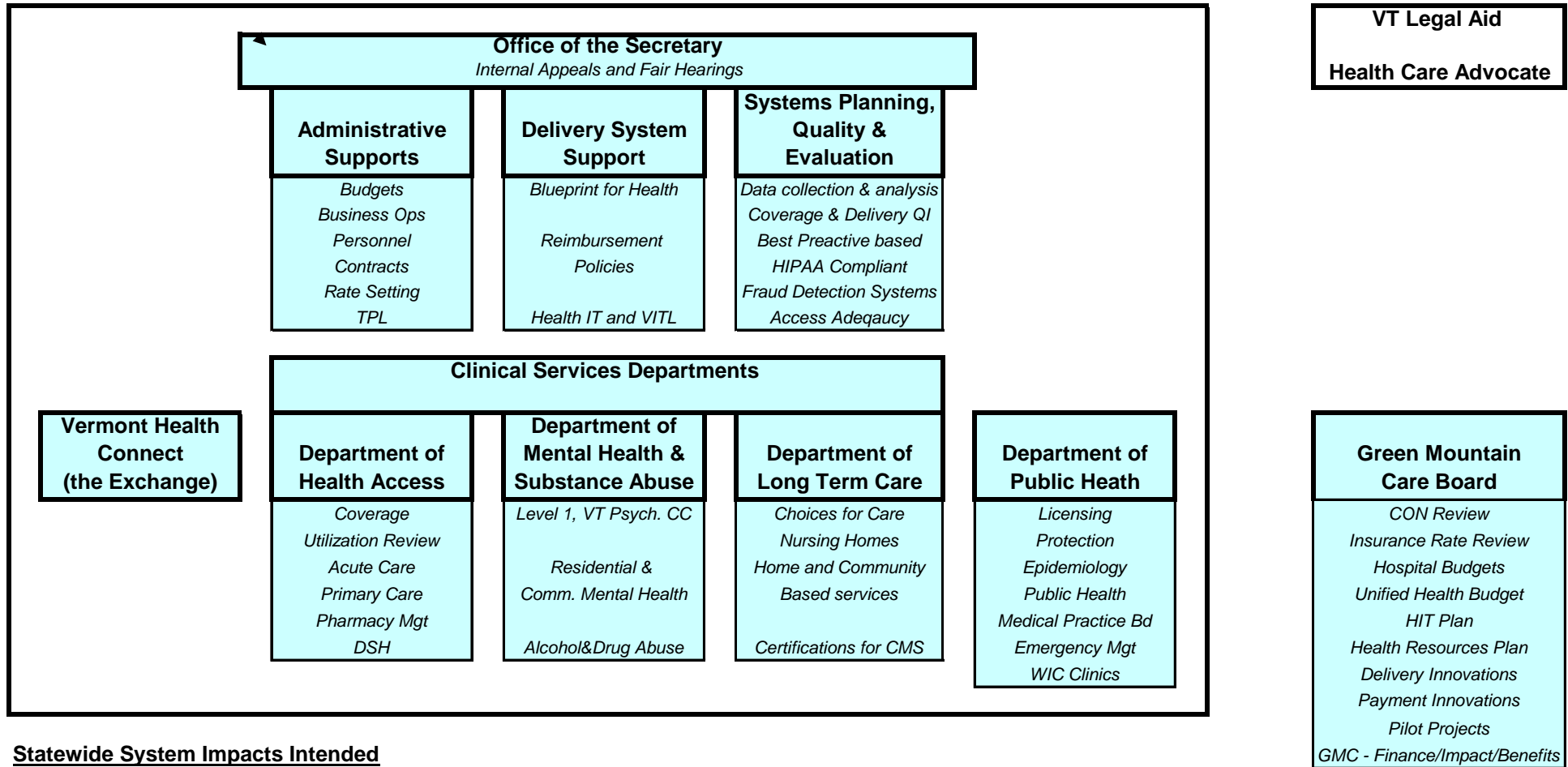


AGENCY OF HEALTH CARE ADMINISTRATION



Statewide System Impacts Intended

- 1) Provides high level of management to the largest budget and program area of state government
- 2) Consolidates health care administration and oversight for both policy and budget development
- 3) Aligns health care administration structure with Blueprint for Health framework and Global Commitment Vision
- 4) Creates clearly defined locus of responsibility and accountability for statewide healthcare policy and administration
- 5) Recognizes the prevalence of co-occurring disorders and shared provider networks
- 6) Provides integration of mental and physical health
- 7) Support chronic care model across all populations and diagnoses
- 8) Greater fiscal oversight and accountability
- 9) Reduce health care cost trends in the state (both private and public) by this integrated approach to policy and program administration.

AGENCY OF HUMAN SERVICES

